

## CEILINGS INSTALLATION GUIDE

# Baffle

Baffle is vertically installed unframed units. It is available in different sizes and a wide range of colors. Two hanging methods: free hanging of each of the baffles or using a connector profile that maintains a uniform hanging.

THICKNESS

12 mm

24 mm

HIEGHT

20 cm

40 cm

MAX LENGTH

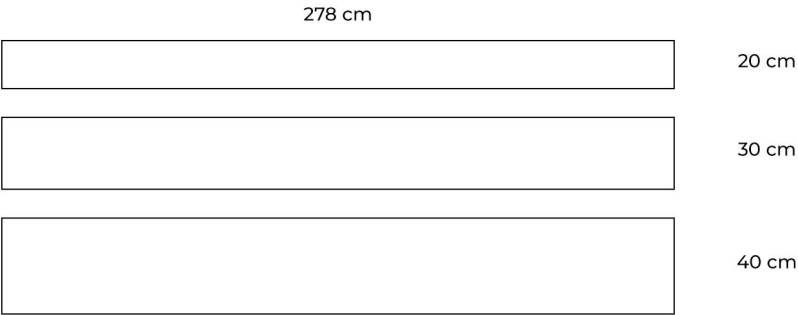
30 cm

278 cm

Customized sizes are available.

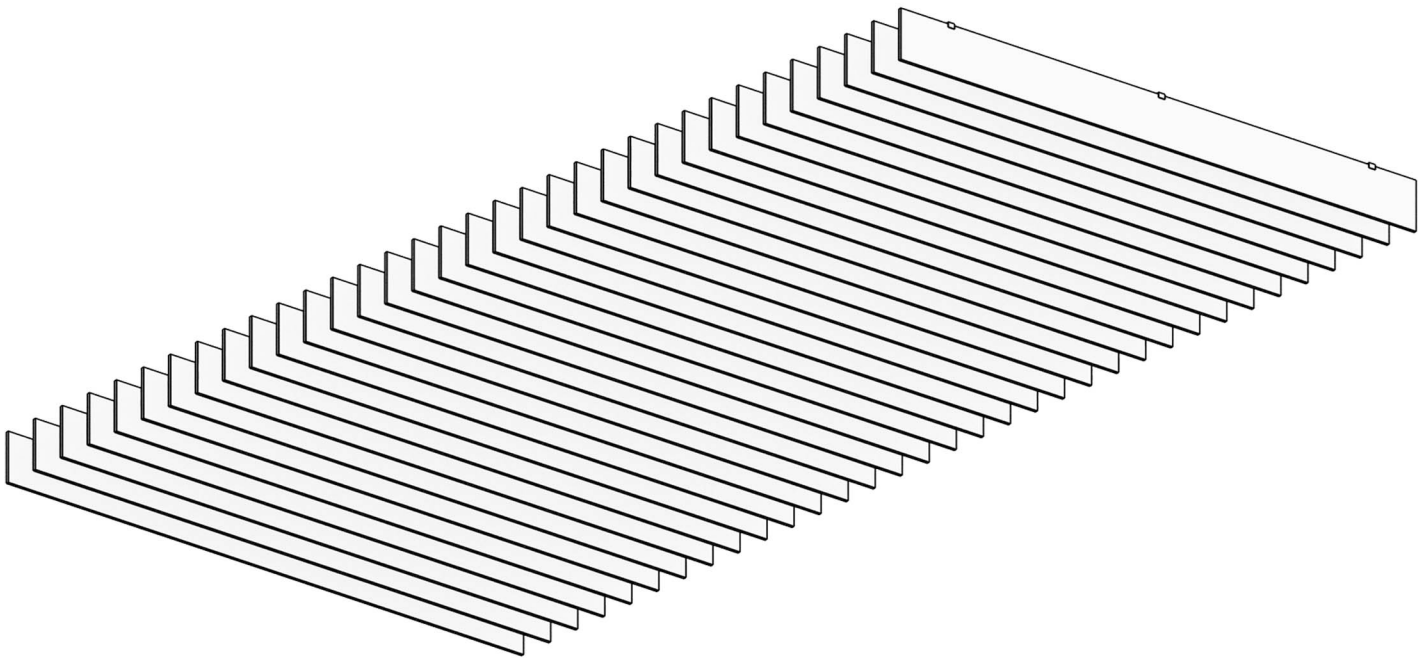
**DIMENSIONS**

---



**ISOMETRY**

---

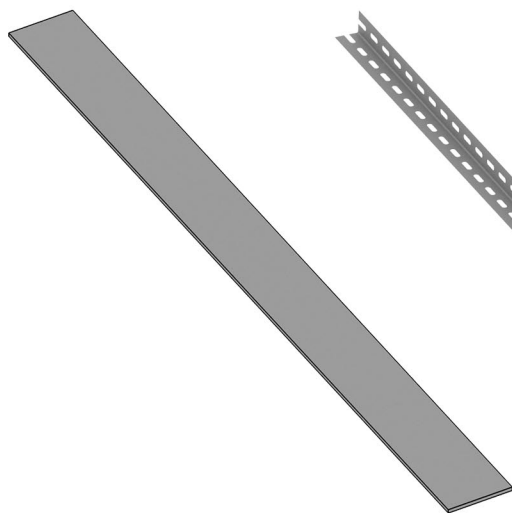


## INSTRUCTIONS

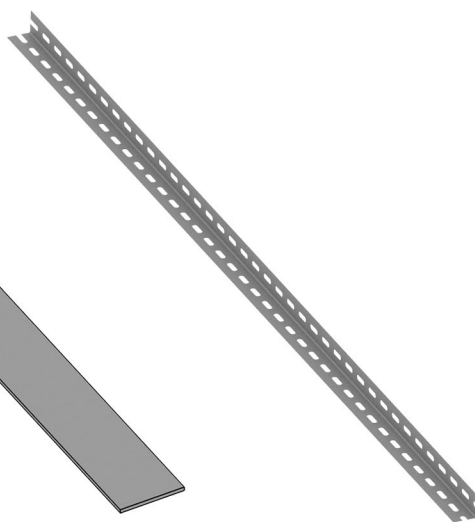
# These are your parts.

### TYPE A (Uniformed Hanging)

---



**Baffle**



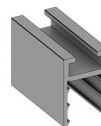
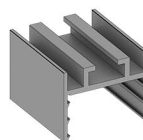
**Perforated L Profile**



**Screw  
& Nut**



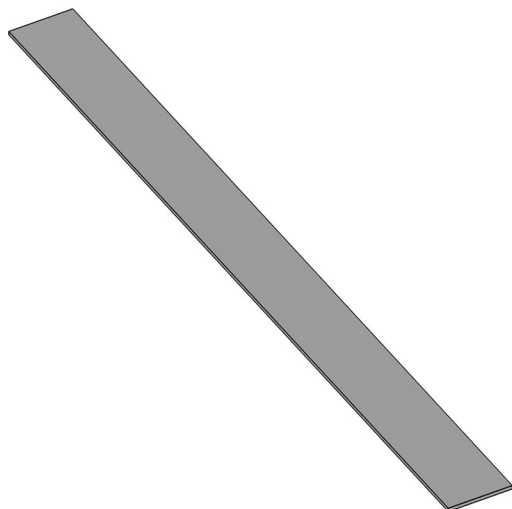
**Adjustable  
Hanger**



**Dedicated U Profile**  
24mm and 12mm, according  
to Baffle

### TYPE B (Free Hanging)

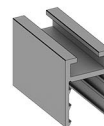
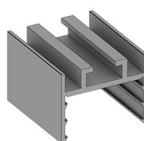
---



**Baffle**



**Dedicated Cable  
Hanging Accessory**

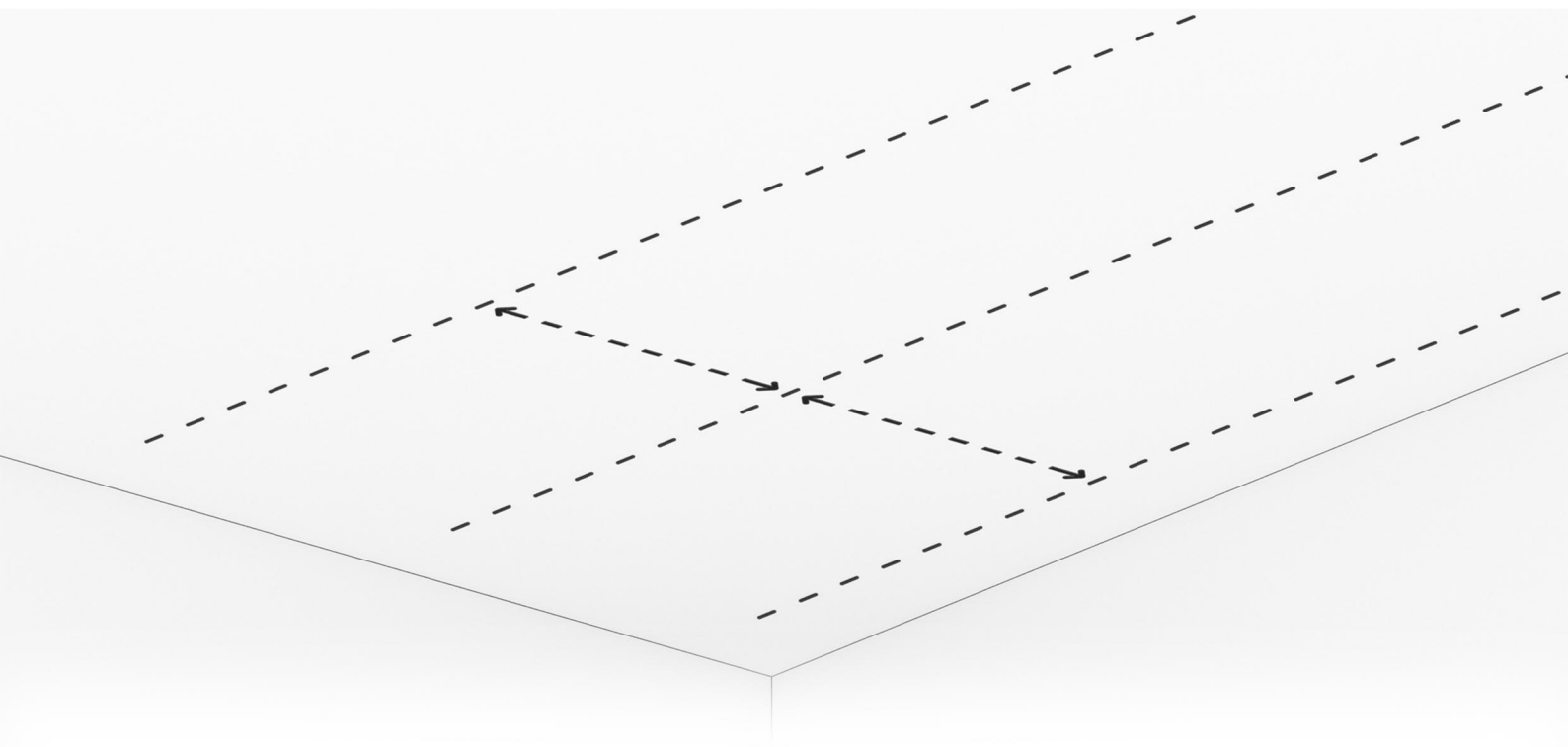


**Dedicated U Profile**  
24mm and 12mm, according  
to Baffle

TYPE A (Uniformed Hanging)

---

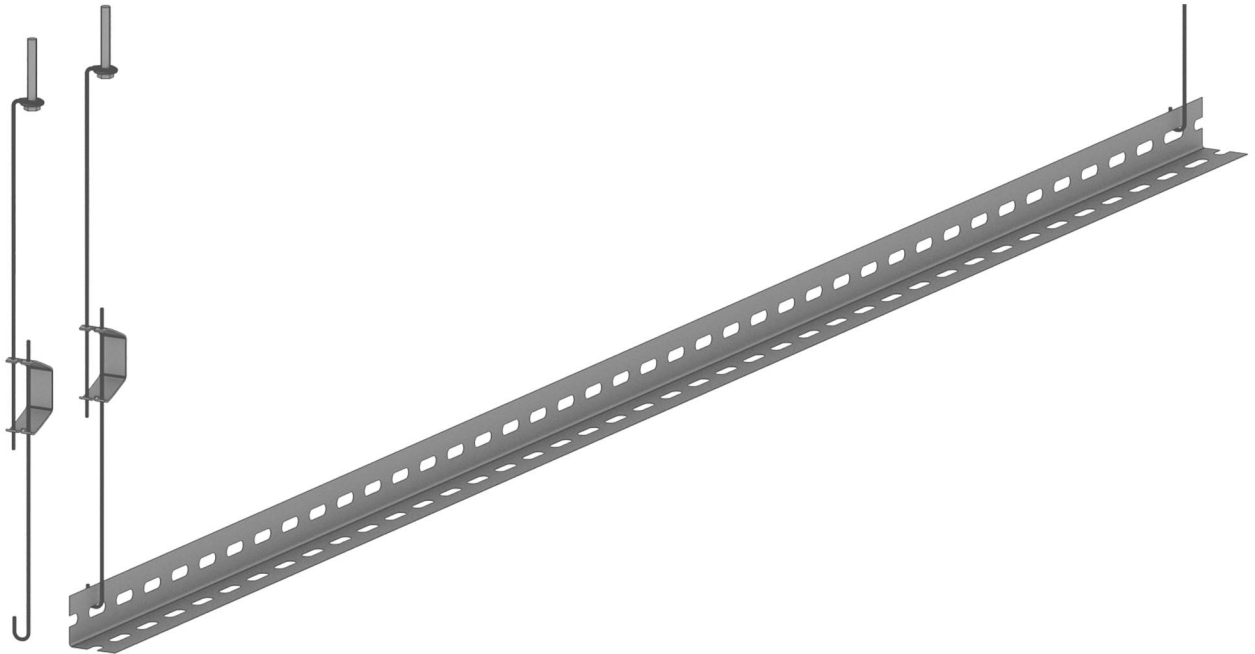
- ① **Mark the ceiling line on the above ceiling. Keep a gap of 80-120 cm between hanging rows.**



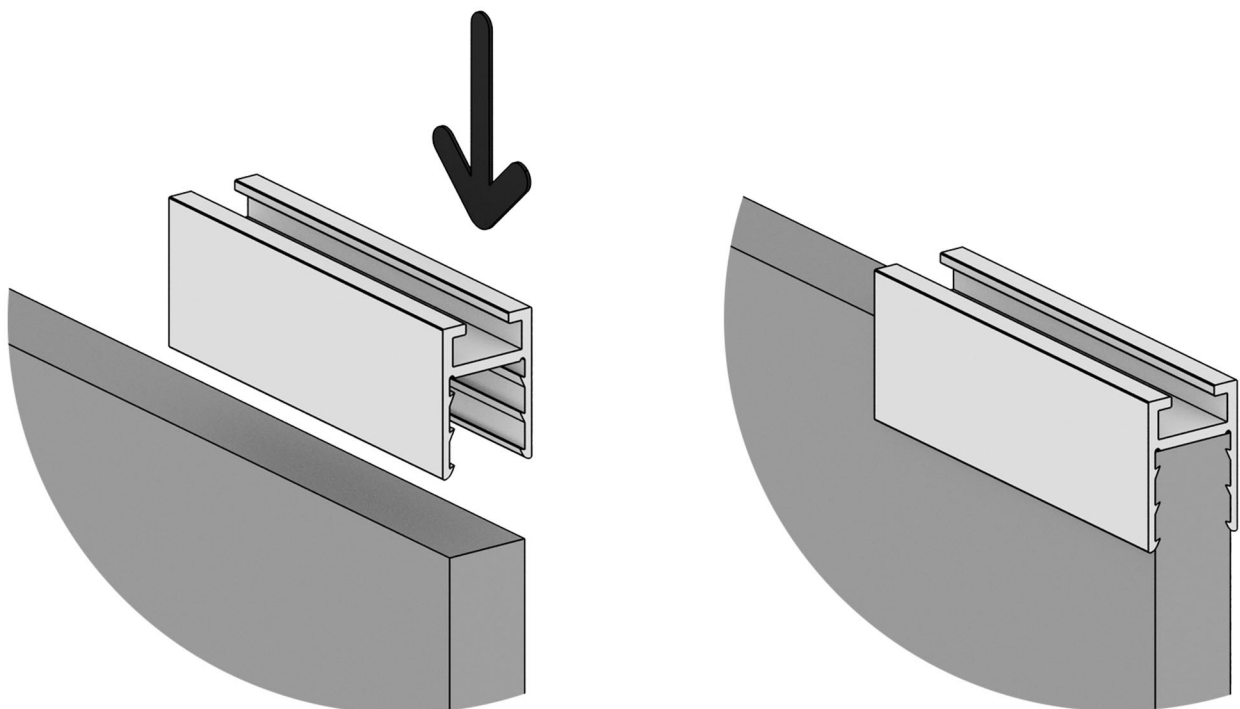
- ② **Install the adjustable hangers accordingly.**



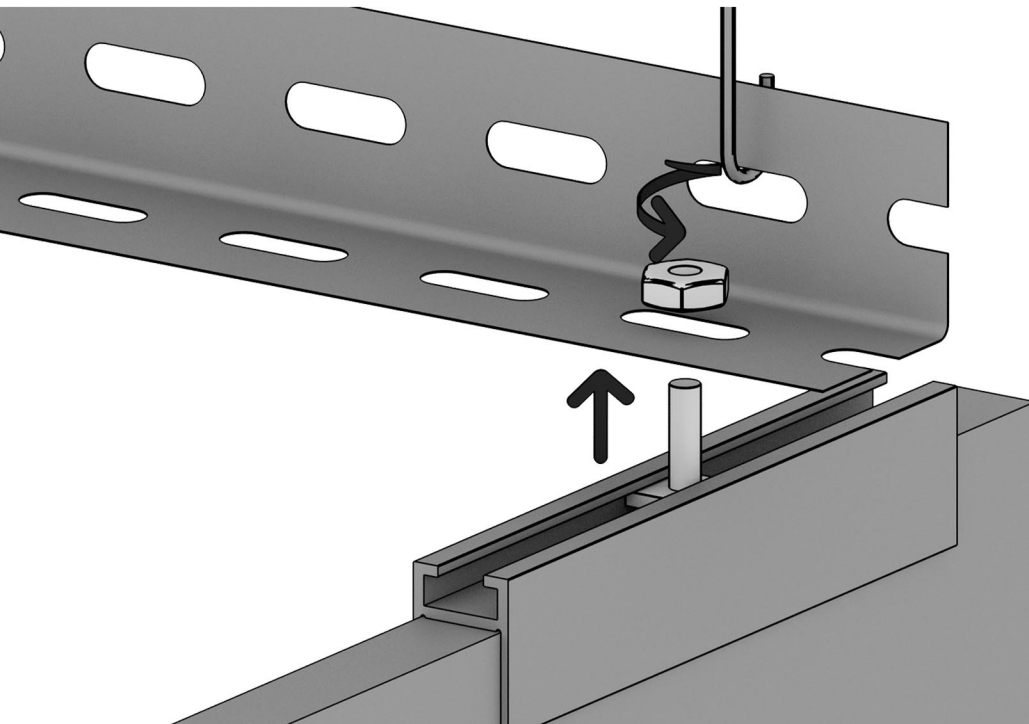
③ **Connect the Perforated L Profiles to the Adjustable Hangers.**



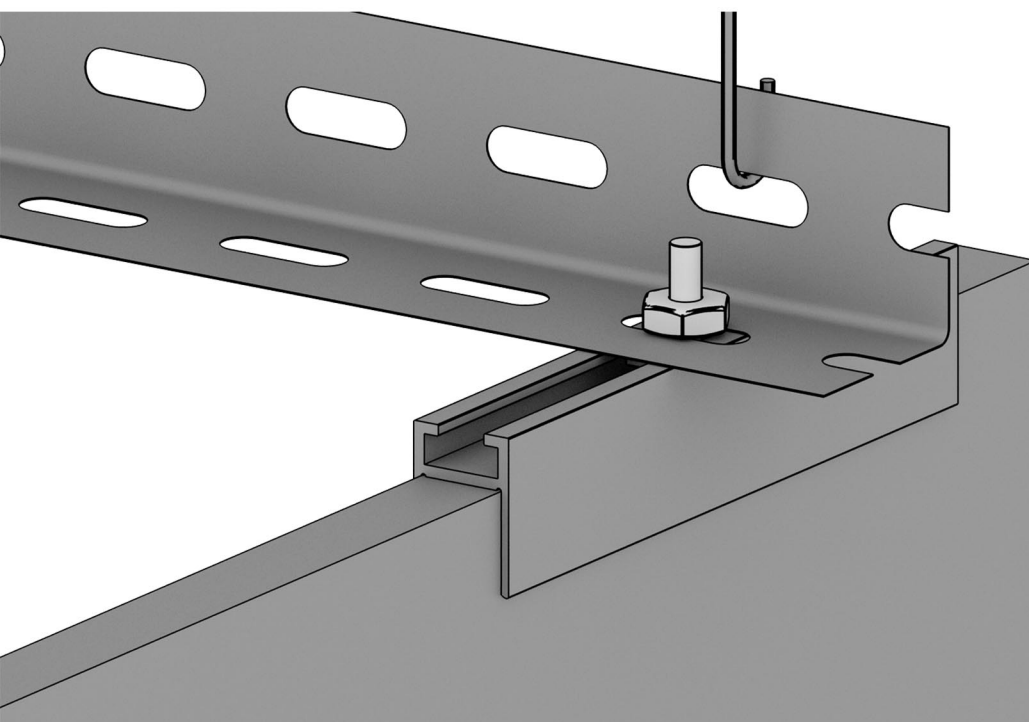
④ **Nail the U Profile into the Baffles.**  
**Make sure to do so all the way down.**



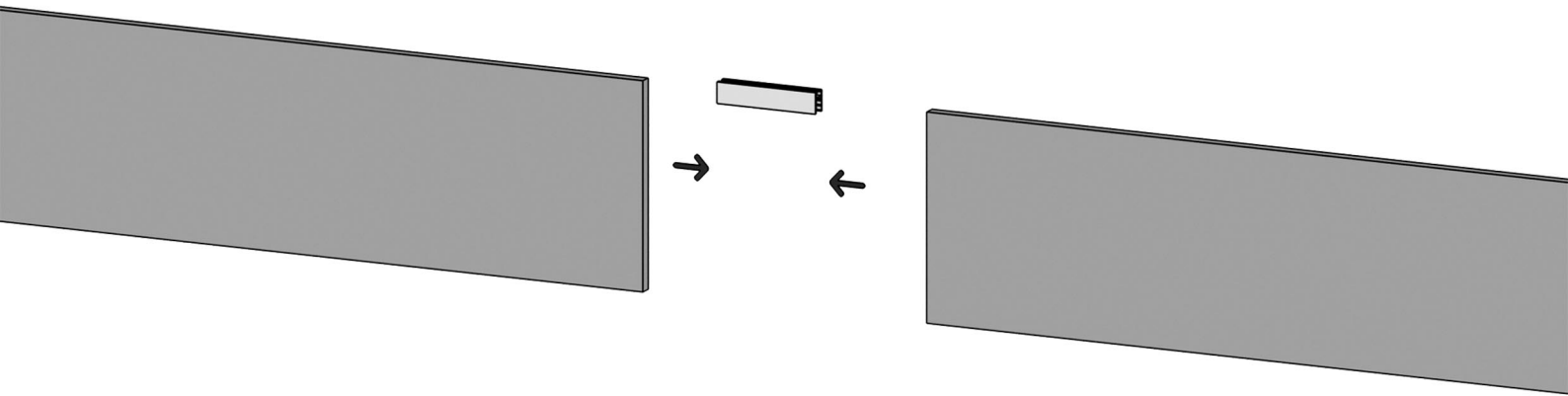
5 **Thread the screw into the U Profile.**



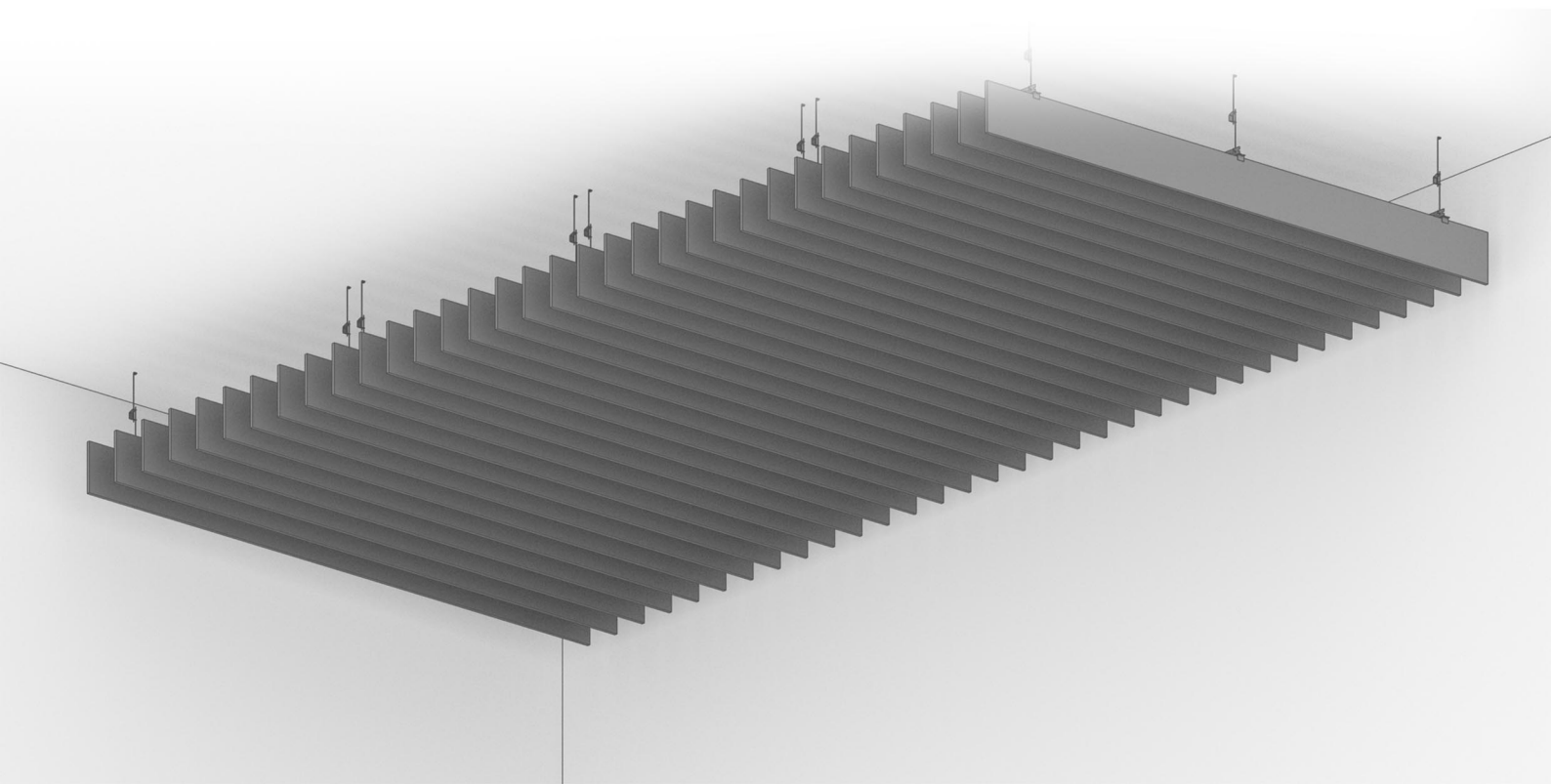
6 **Tighten the nut to the screw.**



- ⑦ **When two Baffles aligned - make sure to connect them with a U Profile.**



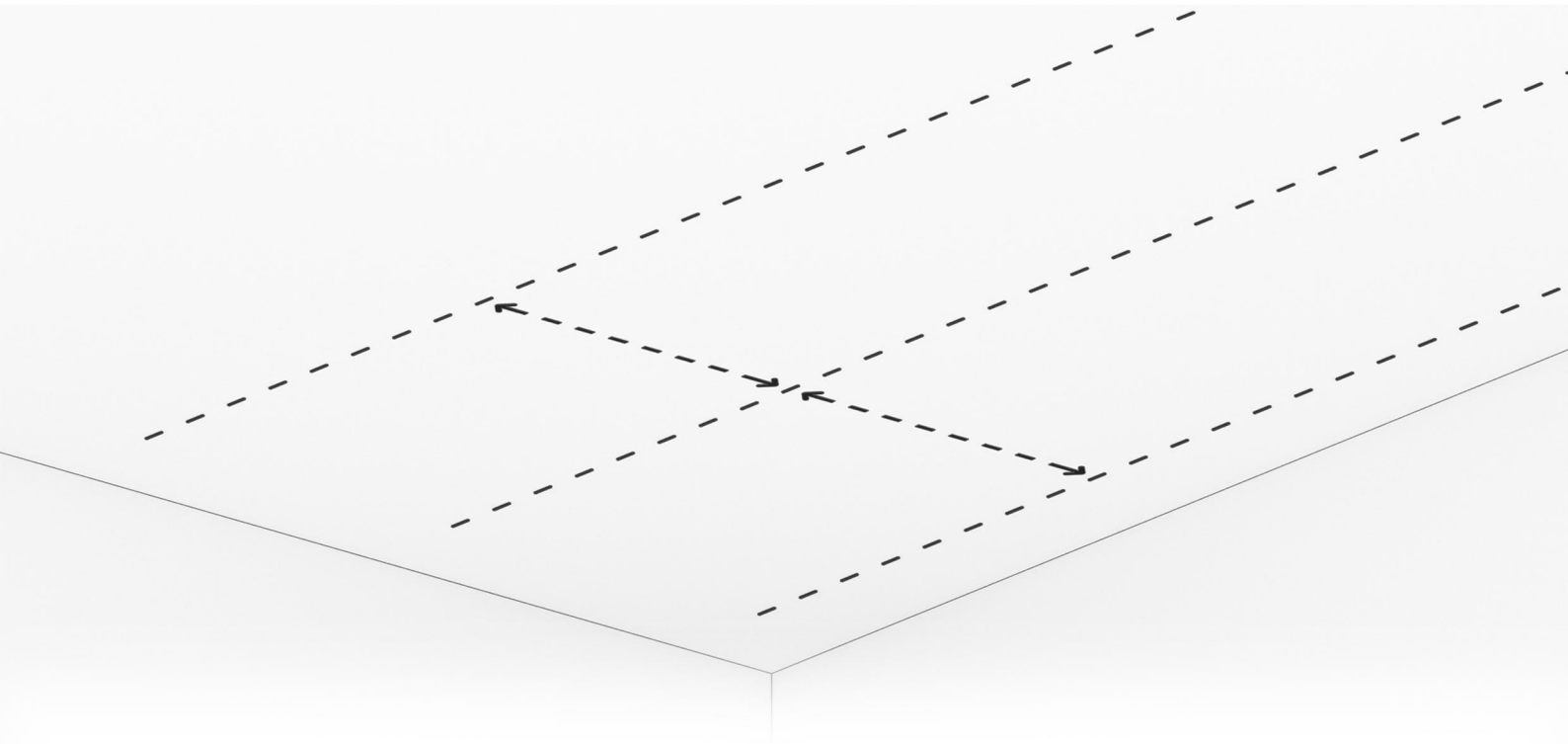
- ⑧ **Repeat the process for the entire ceiling.**



**TYPE B (Free Hanging)**

---

- ① **Mark the ceiling line on the above ceiling. Keep a gap of 80-120 cm between hanging rows.**

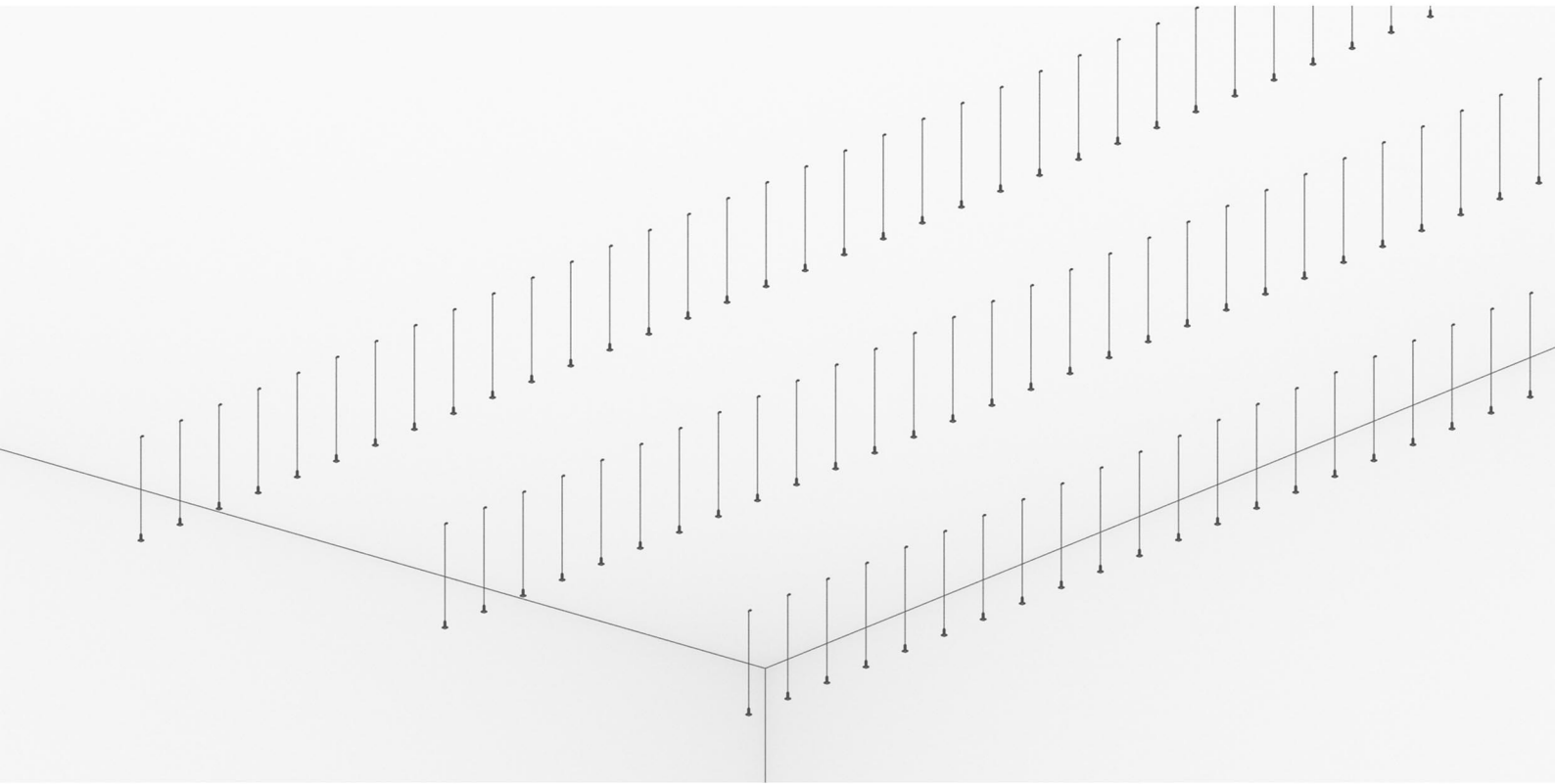


- ② **Install the adjustable hangers accordingly.**

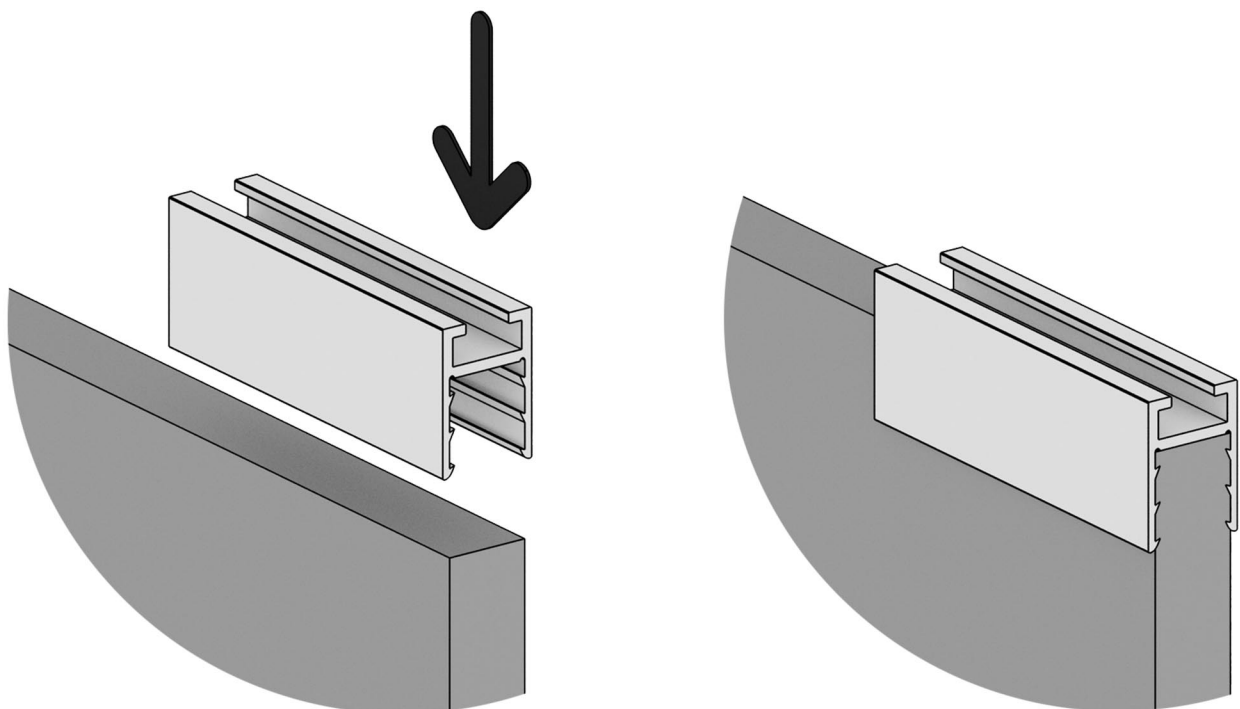




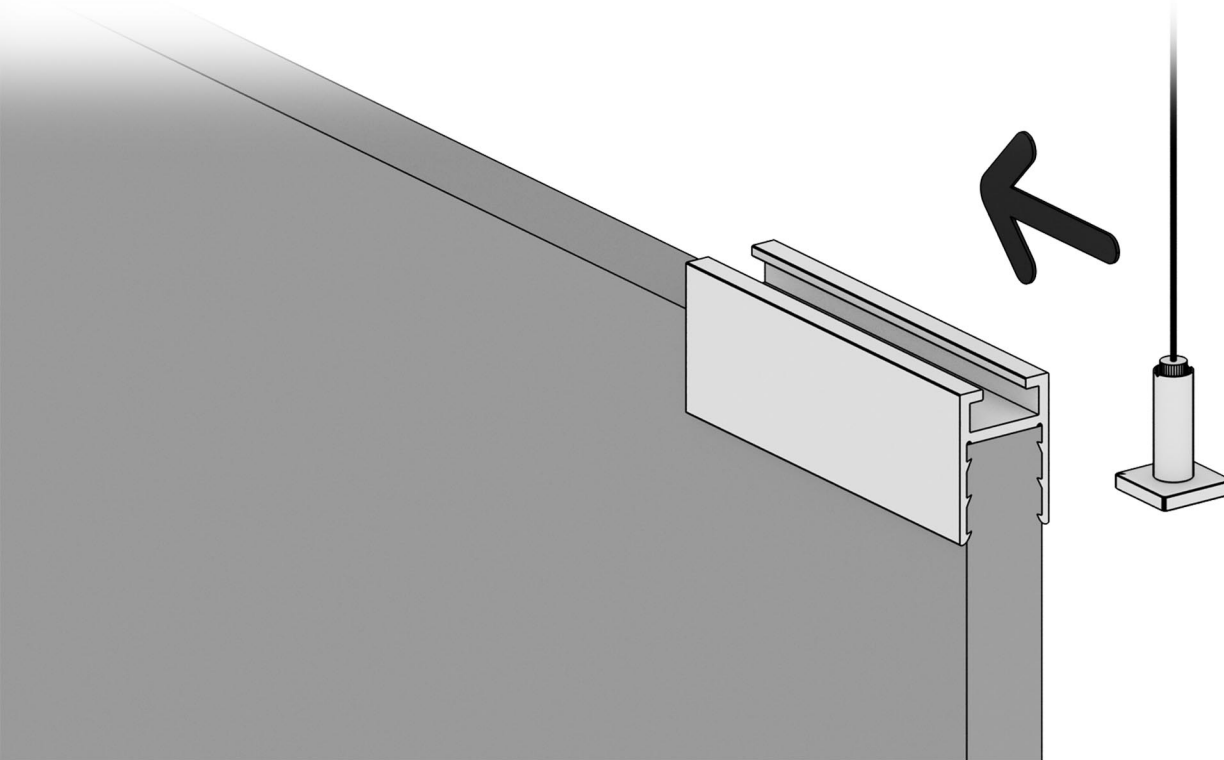
③ **Keep the gap at a consistent distance.**



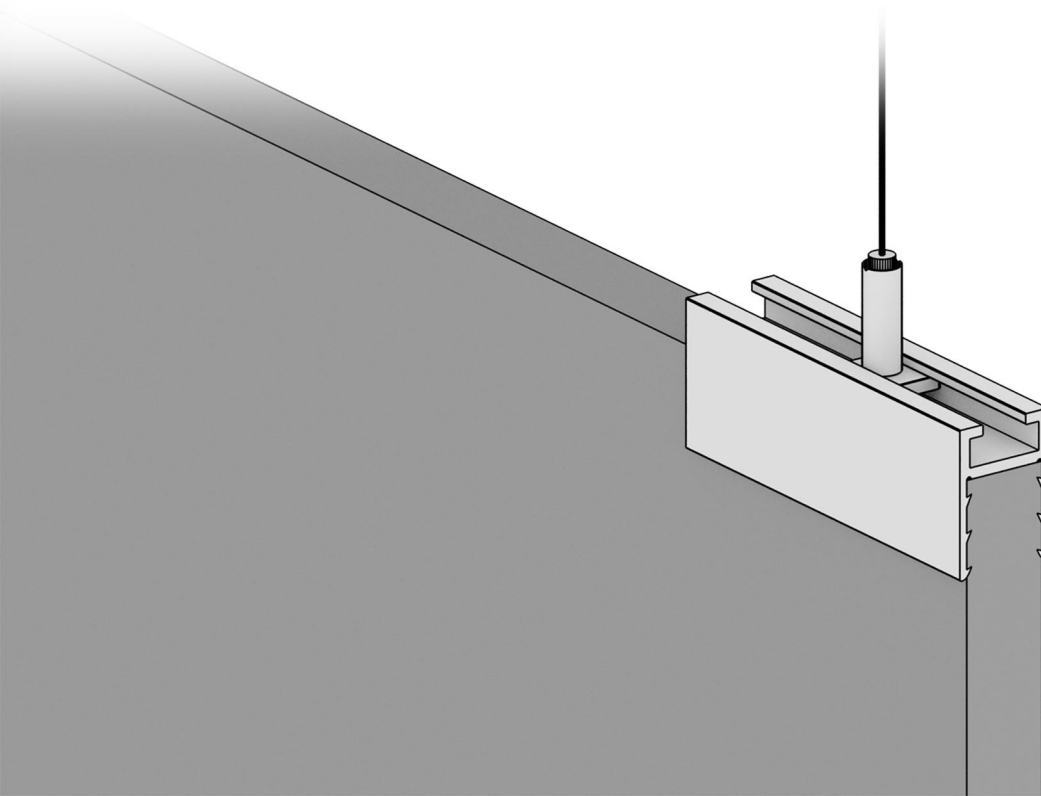
④ **Nail the U Profile into the Baffles.**  
**Make sure to do so all the way down.**



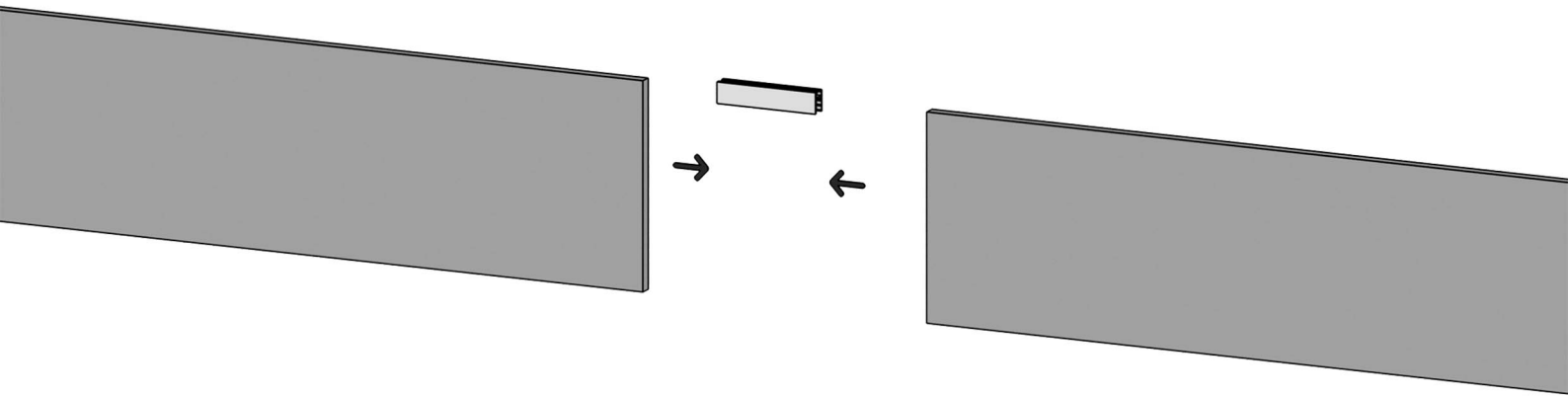
- ⑤ **Thread the dedicated cable hanging accessory into the U Profile.**



- ⑥ **Make sure it is properly tightened.**



- ⑦ **When two Baffles aligned - make sure to connect them with a U Profile.**



- ⑧ **Repeat the process for the entire ceiling.**

